

Order of Service

Sunday, August 25, 2019

10:30 a.m.

+Welcome and Announcements Kate Franta, Worship Associate

Passing the Peace

Ring the Gong

Prelude Nina Cottman, viola

Call to Worship K. Franta

Chalice Lighting K. Franta

***Hymn** #115 *God of Grace and God of Glory*

***Unison Affirmation**

First Unitarian Church of Wilmington is a beloved community that nourishes minds and spirits, fights injustice, and transforms the world through loving action.

Musical Response *Out of Love* by Lauren Lane Powell Threshold Choir

Tale for all Ages “Green Lizards vs. Red Rectangles” by Steve Antony

Departing Blessing *(sing through twice)*

For you shall go out in joy, for you shall go out in joy,
and come back in peace, and come back in peace, blessed be.

Prayer / Meditation Rev. Pamela Wat

Shared Silence

Prayers of the People

Musical Meditation *Let Love*, by Agnieszka Helena Wolska Threshold Choir

Reading excerpt by Theodore Parker Rev. Pamela Wat

***Hymn** #403 *Spirit of Truth, of Life, of Power*

Sermon Rev. Pamela Wat

***Hymn** #297 *The Star of Truth*

Stewardship Moment K. Franta

Congregation in unison: *To the work of this congregation, which is weaving a tapestry of love and action, we dedicate our lives and these, our offerings.*

Offertory Nina Cottman, viola

Closing Words Rev. Pamela Wat

Extinguishing the Chalice

Postlude Nina Cottman, viola

The Brandywine Threshold Choir is a group affiliated with First Unitarian Church. They sing for patients in hospice, to ease their pain as they go through the threshold over living and dying. Rebecca Fisher is the leader, please speak with her for more information.

* Please stand, as you are comfortable in body or in spirit.
+ Ushers welcome late-comers into the service at this time.

Pastoral Care Needs:

If you are experiencing an illness or hospitalization, struggling with a loss, facing changes and stresses in life, or just need somebody to listen, the Pastoral Care team is here for you. Contact Dale Megill the Pastoral Care Associate for the month, at DaleM@firstuuwilm.org

Thank you to all our volunteers!

CHURCH OFFICE: Lucy Rabe
GREETERS: Paul McGhee, Steve & Cindy Cohen
USHERS: Karen Berrie, Suzie Cornell, Letty Diswood,
Kit Pool
SONG LEADER: Richard Speck
PASTORAL CARE: Dale Megill
FIRST U LIBRARY: Open Sunday mornings 9:00 a.m.-12:00
p.m., first floor classroom wing
WELCOME TABLE: Sandy Shipman, Deb Dalecki
AV TEAM: Jon Claney & friends

OUR MISSION:

First Unitarian Church of Wilmington is a beloved community that nourishes minds and spirits, fights injustice, and transforms the world through loving action.

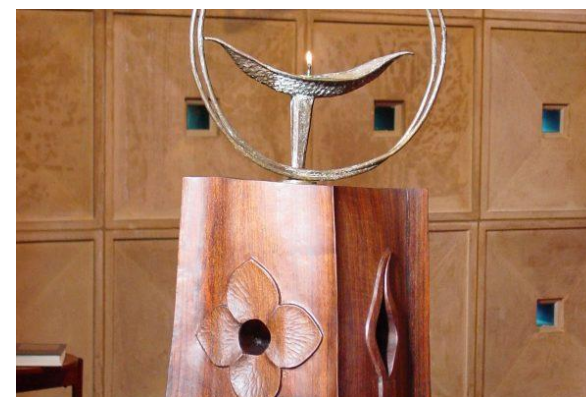
OUR ENDS:

At First Unitarian Church of Wilmington, people of all ages:
Feel safe, accepted, and loved – and empowered to be our authentic selves.
Gain new perspectives and grow as informed, spiritual human beings.
Act on our shared values and UU identity to fight for a more just world.
Experience wonder, inspiration, fulfillment, and joy.

First Unitarian Church

A Welcoming Congregation ~ A Green Sanctuary
August 25, 2019

The Good News



Rev. Pamela Wat

Website:

<http://firstuuwilm.org/>

Follow us:

#firstuuwilm on Instagram
@firstuuwilm on Twitter
@firstuuwilm on Facebook